
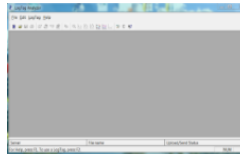


The Download

1. Open the Control Solutions program by double clicking on the icon  on the desktop to open grey screen:



2. Connect the USB Interface cradle to the computer:
(If it is not already connected)



3. Insert recorder into cradle:

Data is automatically downloaded and saved. You will see this animation:

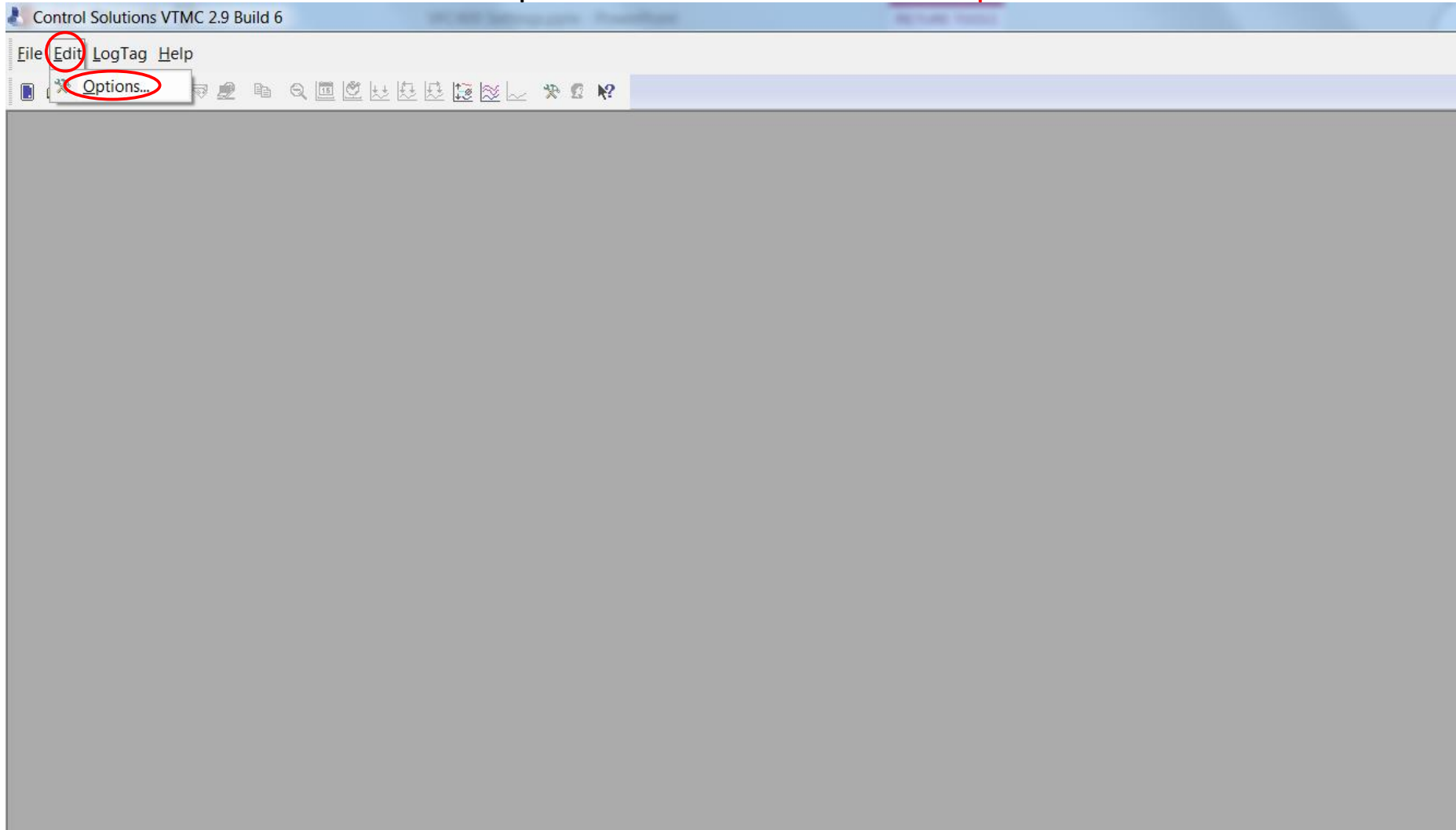


4. Click OK when you are notified that the recorder has been reconfigured:

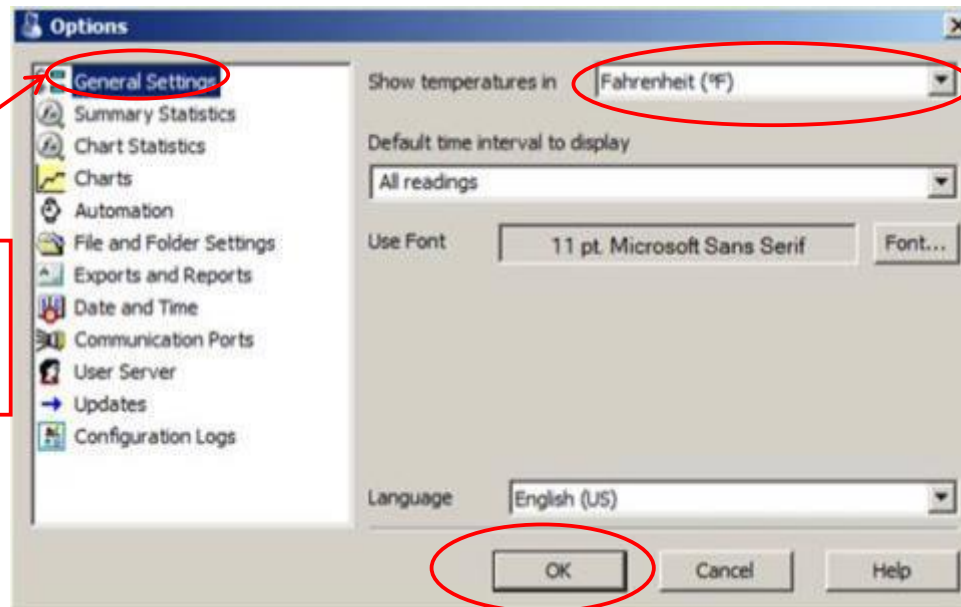


Check Temperature Settings

Step 1: You should see a blank screen when you open the program
Click “**Edit**” in the top left corner and then click “**Options**”



Check Temperature Settings



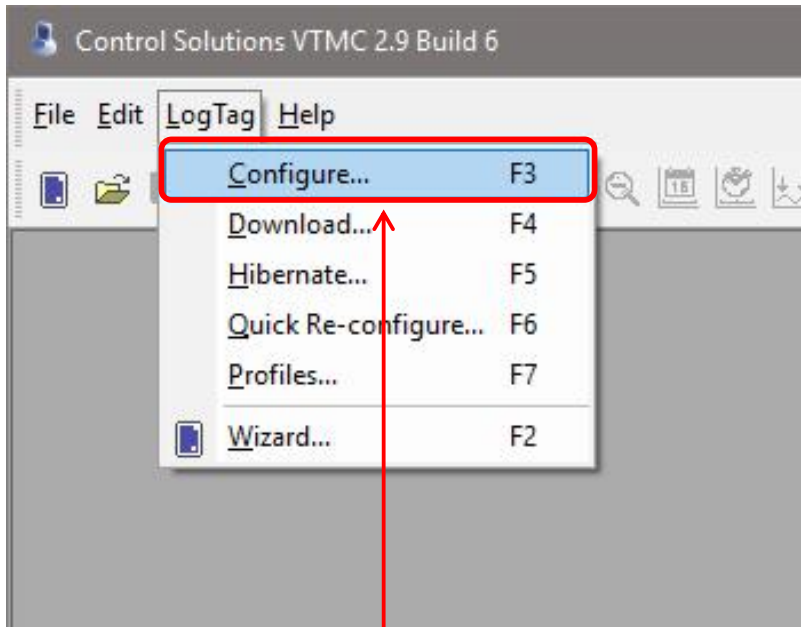
2. Select General Settings in the options list

3. Select Fahrenheit or Celsius*

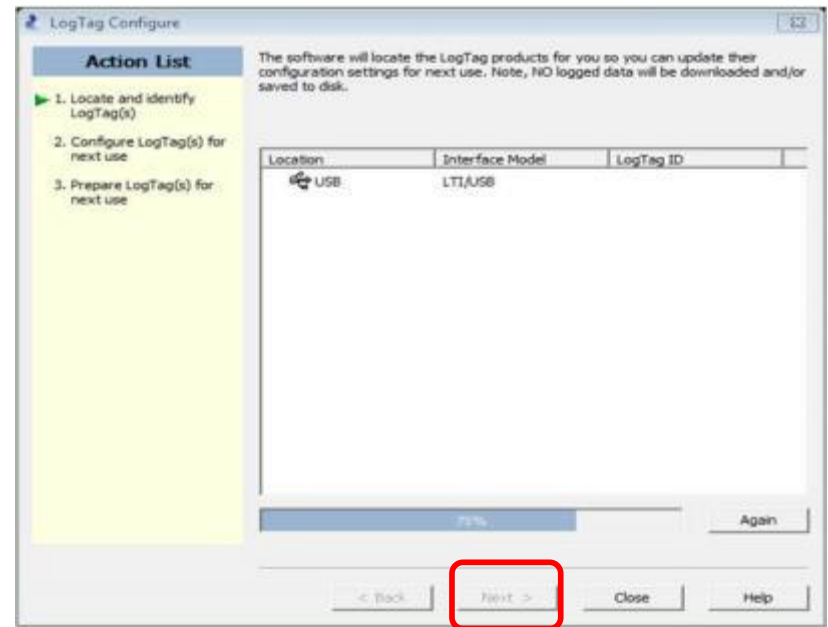
4. Click "OK"

*Select this based on what your clinic records on the temperature logs

Device Configuration



1. Select “LogTag” and “Configure”



2. Wait while the computer program locates the logTag. If this window does not automatically close on its own, select “Next” once the software has searched for the LogTag Device

LogTag Configure: Refrigerator Logger

3. Enter your **VFC PIN #**, **clinic name**, and **Refrigerator** in the “User ID” field. (If you have more than one refrigerator, label them 1 and 2 or A and B)

4a. Enter **15 minutes** in the “Record a reading every” field. “Readings recorded” will automatically change to span at least 80 days.

4b. Make sure **0 minutes** is in the space after “Begin recording after delay of “

LogTag Configure

User ID: C01313 Sunny Day Clinic Fridge

Push button start

LogTag battery: OK

Enable pre-start logging

Record readings continuously, overwrite oldest when memory full

Record readings so that:

Readings recorded will span at 165 days

Number of readings to record 15,841 maximum is 15905

Record a reading every 15 Minutes

Begin recording after a delay 0 Minutes

Trigger alarm when readings above/normal 8 °C

After 4 Consecutive violation readings (1 Hour)

Audible alarm

Trigger alarm when readings below/normal 2 °C

After 2 Accumulative violation readings (None)

Audible alarm

Configure requires a password

Download requires a password

Advanced Options

< Back Next > Close Help

“Readings recorded” will automatically change to span at least 165 days.
****Note: This number will be 80 for the LogTag DDLs (blue DDLs).**

LogTag Configure: Refrigerator Logger

LogTag Configure

User ID: C01313 Sunny Day Clinic Fridge

Push button start LogTag battery: OK

Enable pre-start logging

Record readings continuously, overwrite oldest when memory full

Record readings so that:

Readings recorded will span at 165 days

Number of readings to record 15,841 maximum is 15905

Record a reading every 15 Minutes

Begin recording after a delay 0 Minutes

Trigger alarm when readings above/equal 8 °C

After 4 Consecutive violation readings (1 Hour)

Audible alarm

Trigger alarm when readings below/equal 2 °C

After 2 Accumulative violation readings (None)

Audible alarm

Configure requires a password

Download requires a password

Advanced Options

< Back Next > Close Help

5. **Check** “Trigger alarm when readings above/equal” and enter **46** if you record in Fahrenheit or **8** if you record in Celsius.

6. **Check** “After” and enter “4 consecutive”

7. **Check** “Audible alarm” to enable the DDL to beep when ALARM is triggered

8. **Check** “Trigger alarm when readings below/equal” and enter **36** if you record in Fahrenheit or **2** if you record in Celsius. **Leave the “after” box unchecked.**

9. **Check** “Audible alarm” to enable the DDL to beep when ALARM is triggered

LogTag Configure: Refrigerator Logger

LogTag Configure

User ID: C01313 Sunny Day Clinic Fridge

Push button start LogTag battery: OK

Enable pre-start logging

Record readings continuously, overwrite oldest when memory full

Record readings so that:

Readings recorded will span at 165 days

Number of readings to record 15,841 maximum is 15905

Record a reading every 15 Minutes

Begin recording after a delay 0 Minutes

Trigger alarm when readings above/normal 8 °C

After 4 Consecutive violation readings (1 Hour)

Audible alarm

Trigger alarm when readings below/normal 2 °C

After 2 Accumulative violation readings (No)

Audible alarm

Configure requires a password

Download requires a password

Advanced Options

< Back Next > Close Help

10. Click
"Advanced Options"

LogTag Configure: Refrigerator Logger

11. Make sure the 2nd, 6th, 7th, and 9th boxes are checked. Be sure to select the radio button "Show total summary days collected"

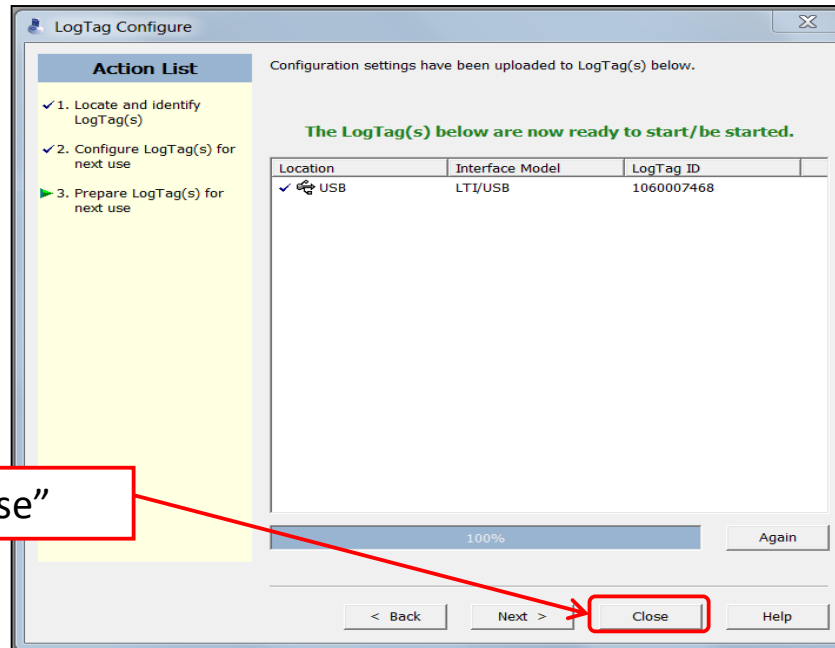
The screenshot shows the 'LogTag Configure Advanced Options' dialog box. A red box highlights a vertical column of checkboxes on the left side of the dialog, including 'Alarm remains on even if readings return to non-violation range', 'Pause alarm/statistics processing for 0 readings when button pressed (None)', 'Show additional display', 'Show total summary days collected', 'Show Fridge Symbol', and 'Show Freezer Symbol'. A red arrow points from the text box on the left to this column. Another red arrow points from the text box on the right to a dropdown menu for 'Temperature display unit' which is open, showing 'Celsius' and 'Fahrenheit' options. A third red arrow points from the text box at the bottom left to the 'OK' button. A fourth red arrow points from the text box at the bottom right to the 'Next >' button. The dialog also features a 'Cancel' button, a 'Help' button, and a 'Close' button at the bottom.

12. Choose **Fahrenheit** or **Celsius**

13. Click **OK**

14. Click **Next**

LogTag Configure: Refrigerator Logger



15. Click "Close"

Congratulations!

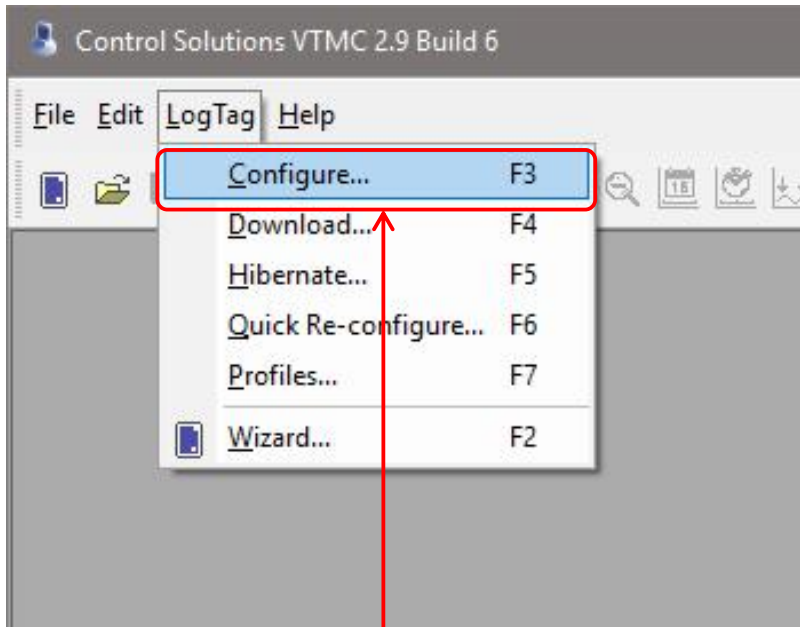
You are done configuring your refrigerator logger. **Important: Label your loggers!**

Take the configured refrigerator logger out of the cradle and label the back of the logger "Refrigerator." If you have more than one refrigerator unit, also include the unit number.

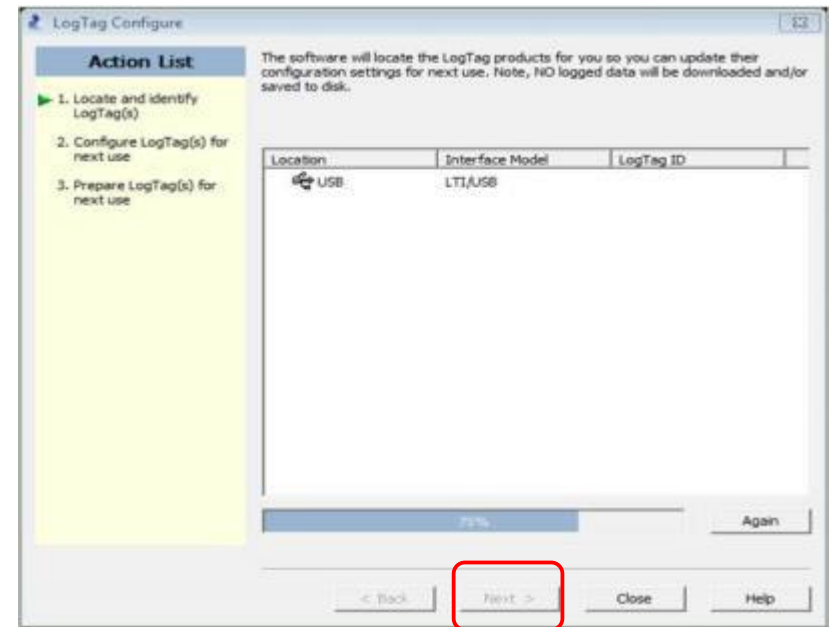
Next, insert the LogTag that you will use in your freezer into the docking station.

LogTag Configure: Freezer Logger

Insert the LogTag that you will use in your freezer into the docking station



1. Select “**LogTag**” and “**Configure**”



2. Wait while the computer program locates the LogTag. If this window does not automatically close on its own, select “**Next**” once the software has searched for the LogTag Device.

LogTag Configure: Freezer Logger

3. Enter your **VFC PIN #**, **clinic name**, and **Freezer** in the “User ID” field. (If you have more than one refrigerator, label them 1 and 2 or A and B)

4a. Enter **15 minutes** in the “Record a reading every” field. “Readings recorded” will automatically change to span at least 80 days.

4b. Make sure **0 minutes** is in the space after “Begin recording after delay of “

User ID: C01313 Sunny Day Clinic Freezer

Push button start

LogTag battery: OK

Enable pre-start logging

Record readings continuously, overwrite oldest when memory full

Record readings so that:

Readings recorded will span at 165 days

Number of readings to record 15,841 maximum is 15905

Record a reading every 15 Minutes

Begin recording after a delay 0 Minutes

I trigger alarm when readings above/equal -15 °C

After 4 Consecutive violation readings (1 Hour)

Audible alarm

I trigger alarm when readings below/equal -40 °C

After 2 Accumulative violation readings (None)

Audible alarm

Configure requires a password

Download requires a password

Advanced Options

< Back Next > Close Help

“Readings recorded” will automatically change to span at least 165 days. ****Note: This number will be 80 for the LogTag DDLs (blue DDLs).**

LogTag Configure: Freezer Logger

Action List

- ✓ 1. Locate and identify LogTag(s)

User ID: C01313 Sunny Day Clinic Freezer

Push button start

LogTag battery: OK

Enable pre-start logging

Record readings continuously, overwrite oldest when memory full

Record readings so that:

Readings recorded will span at 165 days

Number of readings to record 15,841 maximum is 15905

Record a reading every 15 Minutes

Begin recording after a delay 0 Minutes

Trigger alarm when readings above/equal -15 °C

After 4 Consecutive violation readings (1 Hour)

Audible alarm

Trigger alarm when readings below/equal -40 °C

After 2 Accumulative violation readings (None)

Audible alarm

Configure requires a password

Download requires a password

Advanced Options

< Back Next > Close Help

5. **Check** “Trigger alarm when readings above/equal” and enter **5** if you record in Fahrenheit or **-15** if you record in Celsius.

6. **Check** “After” and enter “4 consecutive”

7. **Check** “Audible alarm” to enable the DDL to beep when ALARM is triggered

8. **Check** “Trigger alarm when readings below/equal” and enter **-40** if you record in either Fahrenheit or Celsius. Leave the “after” box **unchecked**.

9. **Check** “Audible alarm” to enable the DDL to beep when ALARM is triggered

LogTag Configure: Freezer Logger

LogTag Configure

Action List

- ✓ 1. Locate and identify LogTag(s)
- ▶ 2. Configure LogTag(s) for next use
- 3. Prepare LogTag(s) for next use

User ID: C01313 Sunny Day Clinic Freezer

Push button start LogTag battery: OK

Enable pre-start logging

Record readings continuously, overwrite oldest when memory full

Record readings so that:

Recordings recorded will span at 165 days

Number of readings to record 15,841 maximum is 15905

Record a reading every 15 Minutes

Begin recording after a delay 0 Minutes

Trigger alarm when readings above/equal -15 °C

After 4 Consecutive violation readings (1 Hour)

Audible alarm

Trigger alarm when readings below/equal -40 °C

After 2 Accumulative violation readings (None)

Audible alarm

Configure requires a password

Download requires a password

Advanced Options

< Back Next > Close Help

10. Click "Advanced Options"

LogTag Configure: Freezer Logger

11. Make sure the 2nd, 6th, 7th, and 9th boxes are checked. Be sure to select the radio button "Show total summary days collected"

LogTag Configure Advanced Options

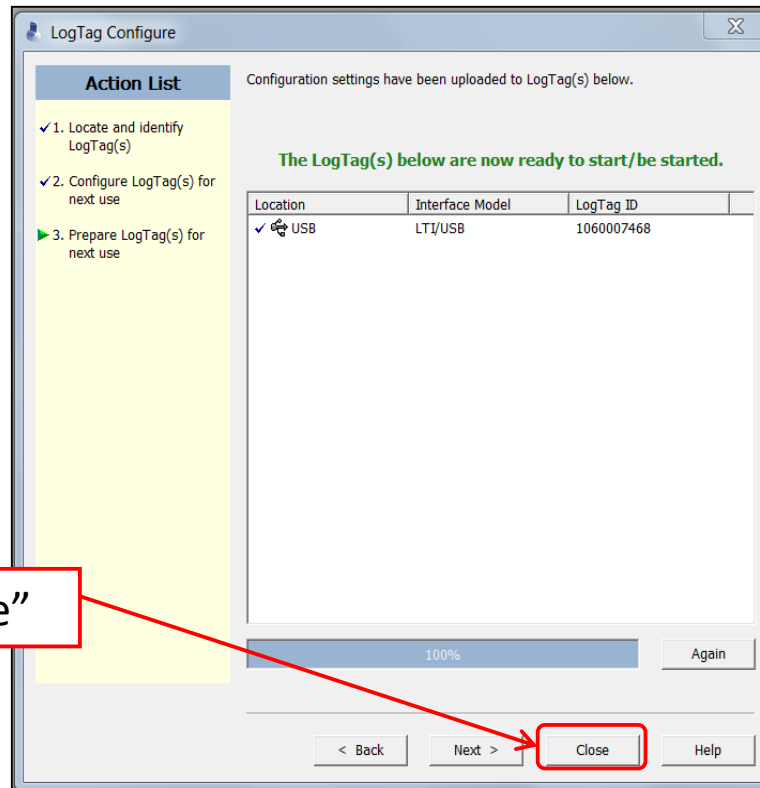
- Clear and reset alarm when STOP/Clear button pressed
- Alarm remains on even if readings return to non-violation range
- Pause alarm/statistics processing for 0 readings when button pressed (None)
- Temperature display unit: Celsius
- Switch off display after 30 seconds (Power save)
- Sound alarm if not inspected by
- 12:00 AM Mo Tue Wed Thu Fri Sat Sun
- Show additional display
 - Show total summary days collected
 - Show Fridge Symbol
 - Show Freezer Symbol
- Allow logging stop with STOP button
- Allow reset of logger with START button
- Enable Quick start/stop mode (if supported)

13. Click OK

12. Choose Fahrenheit or Celsius

14. Click Next

LogTag Configure: Freezer Logger



15. Click "Close"

Congratulations! You are done configuring the freezer logger. Remove the logger from the cradle and label the back "Freezer." If you have more than one unit, also include the unit number.